



NASStorage Administrator Guide

Configuration On-Board Dual LAN and functions

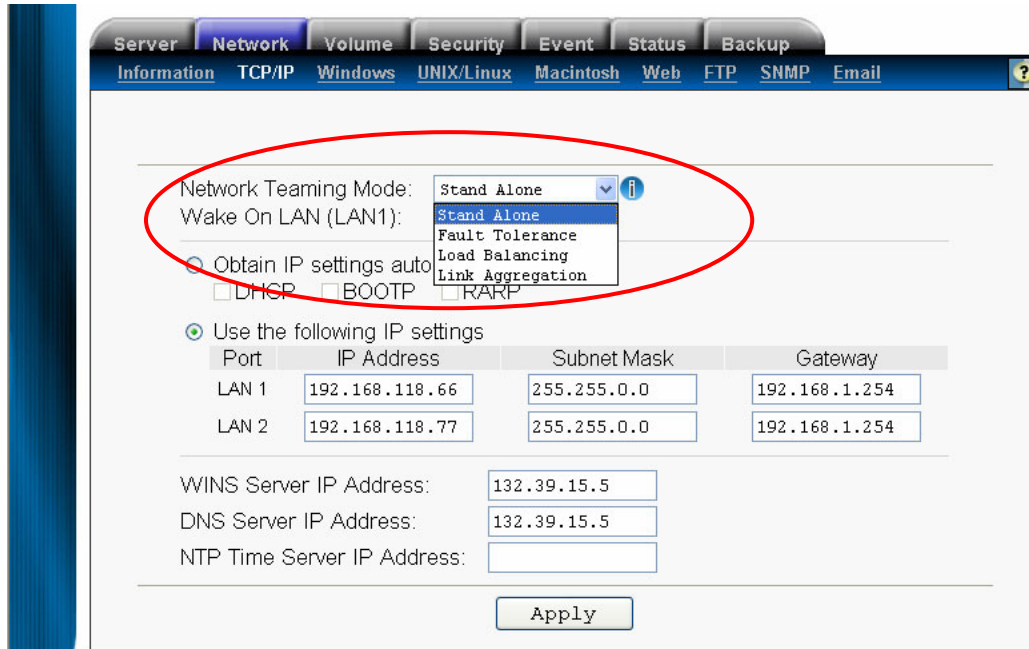
**Version 1.00
10/01/2002**

Prepared by:

**Timas Lin
TS Engineer
Ingrasys Technology Inc.
E-mail: support@ingrasys.com**

Configuration On-Board Dual LAN and functions

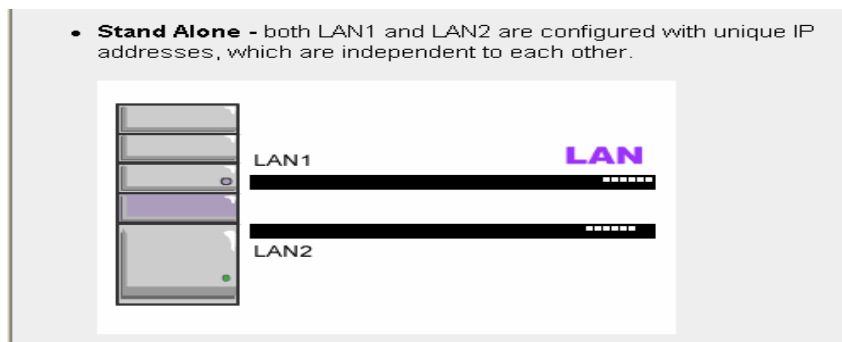
NAStorage (IP) → Network → TCP/IP → on-Board Dual NIC Configuration.



NAStorage build-in Dual LAN (Use intel 8255x chipset), it supports full functions. You can find the sketchy feature instructions below:

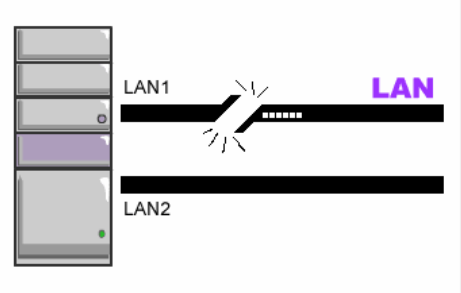
Stand Alone: As two ports, use the opportune moment on stand alone or connect to different segment. For environments with network resources on two separate subnets.

This example shows traffic split between workgroup file sharing and backup



Adapter Fault Tolerance (AFT): In this example, a switch in the subnet fails and interrupts data flow. Traffic is automatically routed to the backup network interface to avoid interruption.

- Fault Tolerance** - uses LAN2 to take over for the LAN1 if LAN1 fails to connect to the network, which is designed to ensure server availability to the network.

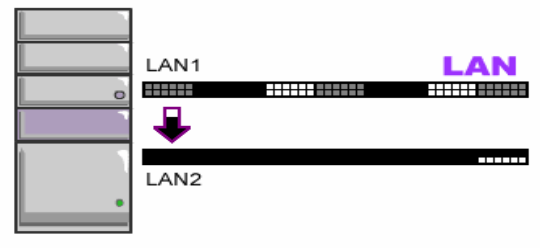


Intel Spec: Default mode when a team is created and the mode is not specified. A secondary adapter in the team automatically takes over on any failure of the primary connection (cable, adapter or port). Only one network adapter is active at a time. After a failover, if the connection to the primary adapter is restored, control passes automatically back to that primary adapter. May mix speed and duplex capabilities and settings. May use a hub or switch.

Adaptive Load Balancing (ALB): If data flow increases to one network connection, traffic is automatically redistributed.

Ensure optimal network performance and user productivity
Equilibrium Restored.

- Load Balancing** - offers increased network bandwidth by allowing transmission to multiple destination addresses using both LAN1 and LAN2. If the traffic of one of the LAN port starts to get congested, requests are then forwarded to the other LAN port with more capacity until the traffic of both LAN ports start to get balance. Note that only the LAN1 Ethernet port receives incoming traffic. Load Balancing also incorporates Fault Tolerance protection.



Intel Spec: A team of 2-8 adapters. The primary adapter receives and transmits, and the transmission load is shared among all adapters in the team. Includes fault tolerance.

NOTE: ALB does not require that all team members have matching speed/duplex settings.

Link Aggregation (LA).- FEC/LA/802.3ad (Cisco*'s Fast EtherChannel* Technology (FEC), Intel Link Aggregation, or IEEE 802.3ad Link Aggregation). A team of 2-8 adapters

at 10/100 speeds that simultaneously receive and transmit data. Includes fault tolerance and load balancing. Must match speed/duplex settings on all team members. This requires a switch that supports Intel Link Aggregation, Cisco's FEC, or static 802.3ad. Spanning Tree Protocol must be turned off. Must match switch aggregation requirements. 3

